

CY2010 Bid Pricing Tool Technical Instructions



Last updated April 6, 2009

CY2010 Bid Pricing Tool Technical Instructions

Table of Contents

1	Introduction	2
2	Bid Pricing Tool Functions	4
2.1	Download and Installation	4
2.2	Opening the BPT	6
2.3	Populating the BPT working file	9
2.4	Finalizing the BPT for submission	17
2.5	Closing the file— New for CY2010	19
2.6	Password Protection	20
2.7	Print Functionality	20
2.8	New Releases	20
2.9	Batch Process	21
2.10	Accessibility Features	25
3	How To... ..	28
3.1	Download a Blank Stand-alone BPT Workbook	28
3.2	Download the Batch Process Tool	28
3.3	Update the BPT Add-In	28
3.4	Update the Add-In for Multiple BPT Workbooks Using the Batch Tool	29
3.5	Finalize an Individual BPT Workbook	29
3.6	Finalize Multiple BPT Workbooks Using the Batch Tool	29
3.7	Use the Backup File to Restore a Prior Version of the BPT	30
3.8	Re-start the Batch Process if it is Abnormally Terminated	30
3.9	Update PD National Averages in Multiple PD files	30
3.10	How to update multiple MA files with PD Premiums	31
4	Troubleshooting and FAQ	32
4.1	Problems with the Add-In File	32
4.2	FAQ's	34
4.3	Support	37
5	Appendix A— Critical Errors	38
5.1	MA Critical Errors and Related Error Messages	38
5.2	MSA Critical Errors and Related Error Messages	40
5.3	PD Critical Errors and Related Error Messages	41
6	Appendix B—Required Fields	43

CY2010 Bid Pricing Tool Technical Instructions

1 Introduction

The Bid Pricing Tool (BPT) is a group of Microsoft Excel workbooks that organizations use to develop and submit the pricing components of their Medicare plan bids. The workbooks are enhanced with special features that facilitate and standardize the bid pricing process. These instructions explain the special features and other technical aspects related to using the BPT. CMS recommends that users read this document thoroughly before using the BPT.

The BPT system is comprised of four Excel workbooks. They correspond to the types of bids organizations can submit to CMS; their filenames, for contract year 2010 (CY2010), are—

1. CY2010_MA_BPT.xls for Medicare Advantage (MA) bids,
2. CY2010_MSA_BPT.xls for Medical Savings Accounts (MSA) bids,
3. CY2010_PD_BPT.xls for Prescription Drug (PD) bids, and
4. CY2010_MA_2YRLB.xls also for MA bids.

The BPT employs three versions of these workbooks that serve different purposes throughout the bid price development process:

- Working files – are read-write enabled files that allow users to enter data in specified input fields; bid prices are automatically calculated (in calculated fields) via formulas resident in the files. Users may edit, save, name, and re-name working versions of the BPT workbooks.
- Finalized files – are read-only files created by a process called finalization, which modifies the format of working files to prepare them for submission to CMS. Finalization converts formula results in calculated fields into hard-coded values, removes formulas and other extraneous elements, and saves the file using a standard naming convention. All BPT functionalities are disabled. The finalized save process will delete or standardize some of the data in the finalized file according to specified business rules. The finalized save process will not change the data in the working file. (See Section 2.4.1.)
- Backup files – are also read-only files created by the finalization process. The backup file uses the same filename as the finalized file with the word “backup” and a timestamp appended to it. The data in the backup file is the same as that in the working file; removal of the text “backup” from the filename will make the backup file editable. As such, backup files enable users to convert backup files back into working files—if needed—for further modification.

New features for CY2010

The following is a list of new BPT features that have been implemented for CY2010. These sections will also be noted as “**New for CY2010**” throughout the document.

1. These instructions, along with the MA and PD BPT instructions, will use BPT references (rather than cell references) to identify specific fields and/or locations within the BPT as demonstrated in the following examples:

CY2010 Bid Pricing Tool Technical Instructions

- a. In the MA workbook, the field “Plan Name” is located in Worksheet 1, Section I, Line 6, which will be abbreviated as MA1.I.6.
 - b. In the PD workbook, “Plan Name” is located in Worksheet 1, Section I, Line 7, or PD1.I.7.
 - c. Some fields require a column specification: “Retail Specialty Allowed Per Script” (in the PD workbook) is located in Worksheet 2, Section II, Line 4, Column f or PD2.II.4(f)
2. MA new County Code critical validations – Section 2.4, Section 5.1 (item 14)
 3. Excel 2007 will be supported for BPT files and the Batch Processing tool. – Section 2.9
 4. When using the Excel 2007 environment, the Batch tool will generate all the reports in the .xlsx format. – Sections 2.9.1, 2.9.4, 2.9.5
 5. The Batch tool is now supported in the Vista Operating System; it can be run under Windows XP and Vista.
 6. The system will detect if the file has been saved when a file is closed. – Section 2.5
 7. Hide/Unhide Formula Sheet function – Section 2.3.6
 8. Enable Protected Excel Functions – Section 2.3.8
 9. The BPT will be recalculated during finalization. – Section 2.4.1
 10. A Working Text Box has been added to the BPT (MA6.V and PD7.V); the Text Box and its contents are deleted from the BPT during finalization. – Section 2.4.1

Key points for working with BPT files in Excel 2007:

- a. You can open and work with a BPT file in Excel 2003 format using Excel 2007 compatibility mode.
- b. You must save and finalize a BPT in the “.xls” format.
- c. When you close a BPT file, you must also close the Excel window before you open another BPT file.
- d. Make sure that the checkbox for Compatibility Check is unchecked when you save the BPT the first time and before you run the Batch Process Tool. (See Section 2.3.12, “Save Functions.”)

CY2010 Bid Pricing Tool Technical Instructions

2 Bid Pricing Tool Functions

2.1 Download and Installation

2.1.1 Configuration Requirement

For the BPT to work properly, you must configure your PC to satisfy the following requirements:

- Have Microsoft Excel 2003 or greater installed.
- Create a folder called BPT2010 in the C:\Program Files path on your PC.
Note: If you are using Windows XP Home Edition you may need to unhide the Program Files folder on your C:\ drive.
- Enable your Excel Standard Toolbar.
Note: The BPT-specific icons are loaded with the Excel Standard Toolbar whenever a workbook is opened. If the Excel Standard Toolbar is removed, the BPT-specific icons will be removed and will not re-appear until the workbook is re-opened.
- For Excel 2003, set your Excel Macro Security Settings to Medium (recommended). You can do this by selecting Tools, Macro, and the Security command from your Excel menu bar.
- For Excel 2007, set your Excel Macro Security Settings to “Disable all macros with notifications.” You can do this by selecting the Office Button, Excel Option, Trust Center, Trust Center Settings, Macro Settings.
- Enable macros when you open the BPT workbook.
- Install the BPT add-in (BPT.xla) in the C:\Program Files\BPT2010 folder.

2.1.2 Installing the Add-in File

The CY2010 BPT is comprised of the following two Microsoft Excel file types:

1. Workbooks: MA, PD, MSA and MA Two Year Look-back (.xls files), and
2. Macro code: BPT Add-In (.xla file).

The BPT workbook file contains the BPT worksheets in which bid pricing is calculated based on user-entered data. The BPT add-in contains the code that supports the BPT workbook functionality.

The BPT workbooks and the BPT add-in files can be downloaded as part of the Plan Benefit Package (PBP) software or as separate stand-alone files:

- The BPT workbooks and the BPT add-in files can be downloaded with the PBP software, which contains MA, MSA and PD benefit information. To download the BPT workbooks as part of PBP, go to the Health Plan Management System (HPMS) website and select Plan Bids, Bid Submission, Contract Year 2010, Download, PBP Data Entry

CY2010 Bid Pricing Tool Technical Instructions

Software. Click the Download button and choose Save; an executable file, SetupPBP2009.exe will be saved in a folder of your choosing. When this file is executed (double-clicked), files will be downloaded to a folder of your choosing; the Add-in file will be saved in C:\Program Files\BPT2010. (If the BPT2010 folder does not exist, the PBP process will create it.) The initial PBP installation will save the BPT workbooks to the C:\Program Files\BPT2010 folder. The BPT add-in file will be saved in the C:\Program Files\BPT2010 folder. This installation process will support BPT data pre-population from the PBP. (See Section 2.2.3, “Data Pre-population,” below.)

- You can also download the BPT add-in file and a blank BPT workbook separately to your PC. To download the BPT add-in file and blank BPT workbooks as separate stand-alone files, go to the HPMS website and select Plan Bids, Bid Submission, Contract Year 2010, Download, BPT Spreadsheets.
 - o To download the Add-in file, read the instructions and click Download in Section I. BPT Add-in. The Add-in file must be saved in C:\Program Files\BPT2010.
 - o To download a workbook, read the instructions, choose a workbook, and click Download in Section II. BPT spreadsheets.

This installation process will not support data pre-population from the PBP (i.e., the workbooks will be blank).

Note: You must create the **C:\Program Files\BPT2010** folder and save the BPT add-in file to the BPT2010 folder. If there is an existing BPT2010.xla file in the C:\Program Files\BPT2010 folder, you must always **overwrite** the existing BPT add-in (BPT2010.xla) file saved on your PC with the most current version. (Do **NOT** move/copy the add-in to another location on your PC.)

If you do not save the BPT add-in file in the designated folder, you will receive a message within the BPT workbook stating that the BPT2010.xla (BPT add-in) file cannot be found. The BPT will open in read-only mode. **If the BPT add-in is not saved in the correct folder, you will not be able to use the BPT.**

The BPT add-in will not interfere with any non-BPT files.

For users that prepared BPTs for previous contract years, the CY2007, CY2008 and CY2009 BPT add-in files should be left in place from previous years (i.e., left in their respective folders within C:\Program Files: BPT2007, BPT2008, or BPT2009).

For Excel 2007

When extracting the BPT2010.xla file from the zip file, you will need to use the Copy and Paste function to save the add-in file into the C:\Program Files\BPT2010 folder. If you selected the Save function (or the Save As function), the add-in file will have an incorrect file extension .xlam. **THIS IS ONLY RELEVANT FOR EXCEL 2007.**

CY2010 Bid Pricing Tool Technical Instructions

2.2 Opening the BPT

2.2.1 Macro Security Level Setting

For Excel 2003

The BPT workbooks use macros to perform the built-in BPT functions including the validation and finalization processes.

For security purposes, it is highly recommended that the Macro Security Level Setting be set at Medium. You can do so by selecting Tools, Macro, and the Security command from the Excel menu bar. You will not be able to open the BPT if your macro security settings are set to High or Very High.

If your Macro Security setting is set to Medium, you will be prompted to enable or disable macros when you open the workbook. You must choose “Enable macros” to correctly open the BPT. If you choose “Disable macros,” the workbook will display a screen stating that the macros must be enabled in order to use the BPT. You will have to close and then reopen the workbook to enable macros.

For Excel 2007

For CY2010, BPT working files and Batch tool are supported in Excel 2007. The BPT files on HPMS available for download are in the Excel 2003 format. You will be able to open and work with the BPT files using Excel 2007’s compatibility mode. **However, you MUST save and/or finalize the BPT files in the Excel 2003 (.xls) format once you are finished.** You will only be able to upload an “.xls” BPT file to HPMS.

Note: If a BPT file is saved in the Excel 2007 (.xlsm) format, an error will occur when you attempt to reopen the file. **Please do not save the BPT file in .xlsm format.** This applies to working files as well.

For Excel 2007, the security setting options are “Disable all macros without notification,” “Disable all macros with notification,” “Disable all macros except digitally signed macros,” and “Enable all macros.” For security reasons, it is recommended that you set the setting to “Disable all macros with notification”.

Under the “Disable all macros with notification” setting, the workbook will open with a Splash screen (i.e., a static information screen) and you will see an Option button and a message: “Security Warnings. Macros have been disabled.” You must click the Option button and select “Enable this content”. The workbook will then open with the add-in loaded. The add-in icons will be part of the Standard Excel Toolbar.

Also under the “Disable all macros with notification” setting, it is possible that the workbook will open and be editable without the add-in loaded. This may be due to previous Excel instances that were not closed correctly. In this situation, you must select “Enable this content” to load the add-in. **Do NOT save any changes in the workbook until you select the “Enable Macros”**

CY2010 Bid Pricing Tool Technical Instructions

option. The BPT file will not function properly until the add-in is loaded (when all add-in icons appear on the Add-in Toolbar.)

You will be able to open and work with multiple BPT files in the same Excel 2007 instance. But if you want to close a BPT file and open another one, **you should also close Excel and open the next BPT file in a new instance of Excel.** There are known issues related to Excel 2007 when you open a file in an existing Excel instance. If you encounter any issues when opening a BPT file, then close Excel, go to Task Manager, delete any other Excel processes, then open a BPT file in a new Excel window.

2.2.2 Version Compatibility

Working files for prior years (CY2009, CY2008 or CY2007) and CY2010 working files will NOT work properly in the same Excel instance (i.e., window). You must open separate instances of Excel in order to work with a CY2009 working BPT file and a CY2010 working BPT file at the same time. That is, if you have a CY2010 workbook open, you must open another instance of Excel (Select Start then Programs, etc.) and then open the CY2009 file from within the new instance. You will be able to move between both workbooks.

Note: It is not sufficient to close a CY2009 working BPT prior to opening a CY2010 workbook within the same instance of Excel. The CY2010 workbook MUST be opened in a different instance of Excel by closing Excel before opening the CY2010 workbook. Otherwise you will encounter a “subscript out of range” error. This error will disappear once you close the CY2009 instance and re-open the CY2010 instance.

You must open the working files for the same contract year in the same Excel instance; otherwise you will receive an error message stating that the BPT add-in file is read-only because it is already open in another Excel instance.

Note: These restrictions only apply to working versions of BPT workbooks. You will be able to open a read-only file, such as a finalized or backup file (CY2009 or 2010) and a working file (CY2009 or CY2010) in the same Excel instance.

For returning BPT users (i.e., those that used the CY2009 BPT), you may receive the following error message upon opening the CY2010 BPT for the first time you access the CY2010 BPT:

"There was a general error when attempting to open the workbook. 9: Subscript out of range"

If this error occurs, select Tools, Add-in, and un-check the “BPT2009” box. (Also, verify that the “BPT2010” box is checked.) This will resolve the error when opening the CY2010 BPT thereafter.

For further help with errors when opening the BPT files, see Section 4.1 “Troubleshooting and FAQs.”

CY2010 Bid Pricing Tool Technical Instructions

2.2.3 Data Pre-population

When you use PBP software to download the BPT workbooks, the download process automatically populates (or pre-populates) some of the workbooks' "General Information" section (Worksheet 1, Section I) from the PBP. (The "General Information" entered in Worksheet 1 appears in the header sections of all the other worksheets in the BPT workbooks.) Pre-population, however, occurs only once. If pre-populated information in the header section is inaccurate, you can manually update the data in the BPT. The yellow highlighted cells in the header section of Worksheet 1 are unprotected to allow you to change values if necessary.

Note: After the data pre-population, any information updated on the HPMS website or PBP will not be automatically reflected in the BPT. You must update the BPT manually to maintain data consistency.

If you download a blank BPT directly from HPMS, the "General Information" section will be blank. We recommend that you enter this information before entering other data.

2.2.4 BPT Commands

Upon successfully opening a working BPT with the macros enabled, ten BPT-specific icons will appear in the Excel Standard Toolbar. These icons are only available if the Standard Toolbar is enabled. If you reset the Toolbar to its default setting, the BPT icons will disappear and you must close the workbook and reopen to restore them. Clicking on the BPT icons (pictured below) triggers some of the workbooks' special BPT-specific commands. You can also invoke these commands from the File menu or using the following short cut key combinations.

For Excel 2007, these functions are located in the Add-In menu on the Toolbar.



Icon names (from left to right):

- Finalize BPT: Ctrl+Shift+S
- Circle Invalid: Ctrl+Shift+C
- BPT Refresh: Ctrl+Shift+R
- Validation Report: Ctrl+Shift+I
- Hide/Unhide Non-Validation Input Cell Label: Ctrl+Shift+L
- Hide/Unhide Rate Books: Ctrl+Shift+B
- Enable Protected Excel Functions: Ctrl+Shift+K – **New for CY2010**
- Hide/Unhide Validation Cell Label: Ctrl+Shift+M
- Print Defined Worksheets: Ctrl+Shift+P
- Hide/Unhide Formula Worksheet – **New for CY2010**

CY2010 Bid Pricing Tool Technical Instructions

2.3 Populating the BPT working file

BPT workbooks are the vehicles through which organizations present their plan bids to CMS. Users populate working files by entering required data into specified data-entry fields, and the workbook automatically calculates and displays the results in its calculated fields. (For details on how the workbooks calculate results, see the CY2010 BPT Instructions for MA, MSA, and PD workbooks located in HPMS.)

2.3.1 Data Entry and Cell Formats

Data entry fields are highlighted in yellow. For most fields, data entry follows Excel's "General" format, i.e., character input is stored as text and numerical input is stored as a number. The following four fields, however, are numerical fields that the BPT ultimately stores as text.

- Plan ID (1.I.2 in all workbooks)
- Segment (1.I.3 in all workbooks)
- Region (MA1.I.10, PD 1.I.10)
- County Code (MA5.V.3(b), MSA3.III.2(b))

If data in these fields are entered as numbers, they will display as numbers until the workbook is finalized. (Note: the finalization process – see Section 2.4.1, below – must be successful for these changes to obtain.) To manually enter these fields as text, users should use a leading apostrophe (') and include any leading zeros when entering these values. (For example, to display 030 in the Plan ID field, enter apostrophe, zero, three, zero.) When the "General Information" data is pre-populated from the PBP (see Section 2.2.3, above), the formatting automatically uses a leading apostrophe (') and displays the leading zeros in these fields.

Note: If you select PD Region from the drop down list, it will display as a number and a red circle will appear in the working file. You can correct it by manually entering an apostrophe and the leading zero. If you do not manually correct the value, it will be corrected when you finalize the BPT.

If you copy and paste cells in any of the BPT worksheets, we recommend using Excel's PASTE SPECIAL feature with the PASTE VALUES or PASTE FORMULAS option. This will prevent overwriting a cell's predefined format, which can occur when the standard PASTE command is used. Also, do not use Excel's "Cut" function in the BPT workbooks as it will remove the cell's predefined formatting.

Note: You should use the Delete key instead of the Space bar to delete cell values from the BPT.

2.3.2 Cell Validation

The yellow-highlighted data entry fields fall into three categories with respect to cell validation: validation fields, critical validation fields, and non-validation fields. Validation fields have cell-specific rules regarding the types and format of data that can be entered into them; the rules

CY2010 Bid Pricing Tool Technical Instructions

appear in message boxes called cell labels when the cell is highlighted. Because some cell labels partially obstruct the user's view of the cell, cell label displays can be turned off (see Section 2.3.3, "Hide/Unhide Validation Cell Label") or moved by clicking and dragging.¹


If cell validation rules are not followed, a red circle will appear around the cell. (See Section 2.3.2.1, "Circle Invalid.") If the user edits the data in the cell to bring into compliance with the rule, the red circle will disappear; however, this does not apply to linked cells. (See Section 2.3.8, "Enable Protected Excel Functions.") Users can view a list of all failed validations in a workbook by running a Validation Report. (See Section 2.3.2.2, "Validation Report.")

Critical validation fields are validation fields whose rules must be followed before the workbook can be successfully finalized. (See Section 2.4.1, "Finalization Process.") Critical validation rules are different for each of the BPT workbooks; they are listed in Appendix A, "Critical Errors."

Note: Some calculation fields are validation fields. Users cannot modify calculation cells. To address failed validations in calculation fields, users must modify the data-entry cells that the calculation field formulas refer to.


Non-validation fields are data-entry cells that have no validation rules to display. They do not create red circles or messages in the Failed Validation Report.

2.3.2.1 Circle Invalid

The Circle Invalid function identifies cells that may contain invalid data; it can be invoked by clicking on the  icon on the Toolbar, selecting "Circle Invalid" from the File menu or pressing Ctrl+Shift+C. This function places a red circle around all failed validations in the workbook. If the user edits the data in a cell to bring into compliance with the rule, the red circle will disappear; however, this does not apply to linked data. (See Section 2.3.8, "Enable Protected Excel Functions.") Circle Invalid executes automatically upon opening, saving and finalizing a BPT workbook.

Although red circles disappear when corrective data is manually entered into a cell, it is a good idea to click the Circle Invalid icon frequently to re-validate all the cells in the workbook.

2.3.2.2 Validation Report

The Validation Report function creates a new worksheet that lists of all the failed validations in the workbook; it can be invoked by clicking on the  icon on the Toolbar, selecting "Validation Report" from the File menu, or pressing Ctrl+Shift+I. This function creates two reports: the Failed Validation Report and the Active Cell Validation Report.

The Failed Validation report identifies, for every cell in the workbook with validation errors, the worksheet name, the cell location, the cell value, the input message and whether or not the error

¹ When the user moves a cell label to a new location, ALL CELL LABELS in that worksheet will be displayed in the new location. The default location of the cell label (next to the cell) can be restored by closing and re-opening the workbook.

CY2010 Bid Pricing Tool Technical Instructions

is a critical error (i.e., one that will prevent the workbook from successfully finalizing. You cannot modify the report, but you can copy and paste its contents into another document.

Note: Some cells have both critical and non-critical error checks. If the cell passes the critical checks but fails the non-critical checks, the report will display “Yes” (in the critical error column); you will be able to finalize the file in this scenario.


The Validation Report function will also trigger the Circle Invalid function. If you generate the Validation Report, you will also generate the red circles in the workbooks.

The Active Cell Validation is designed to assist vision-impaired users who use a screen reader. It reports the validation status (Passed, Failed or No Validation) for the active cell on which the cursor is placed.

The validation report worksheet will be hidden when you save, close or finalize a BPT. You can re-generate the report by re-invoking the function.


If a user enters data by linking to another Excel workbook, these links must be refreshed prior to running the Validation Report. (See Section 2.3.7, “BPT Refresh.”)

2.3.3 Hide/Unhide Validation Cell Label

This function turns off the cell labels (pop-up messages that display a cell’s validation rules) for all validation cells, including input and calculated cells in the workbook; it can be invoked by clicking the  icon on the Toolbar, selecting “Hide/Unhide Validation Cell Label” from the File menu, or pressing Ctrl+Shift+M. By default, cell labels are turned on for validation cells. For example, when the user clicks on cell G5 in Worksheet 1 of the MA BPT (MA1.I.5), the input message reads as follows: “G5 Input Cell


Note: This function controls turning on and off input messages for validation cells only. The cells that do not have validations cell label input messages are controlled by the Hide/Unhide Non-Validation Input Cell Label function. (See section 2.3.4 “Hide/Unhide Non-Validation Input Cell Label function.”)

2.3.4 Hide/Unhide Non-Validation Input Cell Label


This function turns on the automatic display of cell labels for non-validation cells, which enables screen readers to read the contents of the cell label’s message; it can be invoked by clicking the  icon on the Toolbar, “Hide/Unhide Non-Validation Input Cell Label” from the File menu, or pressing Ctrl+Shift+L. All cells that do not have validations will display a pop-up input message with the cell location and cell label. When you click on a cell, the screen reader will read the cell’s message which indicates whether the cell is an input cell. For example, if this function is invoked and the user clicks on cell G27 in Worksheet 1 of the MA BPT (MA1.III.a(g)), the following message will be read by the screen reader: “G27 Input Cell Annualized Utilization/1000 for Inpatient Facility”. By default, non-validation cell message do not automatically appear when a BPT file is first opened.

CY2010 Bid Pricing Tool Technical Instructions


2.3.5 Hide/Unhide Rates worksheets

This function allows you to hide or unhide the Rates worksheet (MA and MSA BPTs) and the Statutory Rates worksheet (MA BPT only); it can be invoked by clicking the  icon on the Toolbar, selecting “Hide/Unhide Rate Books” from the File menu, or pressing Ctrl+Shift+. These worksheets will be hidden in the finalized BPT file. You will be able to copy and paste the data to another document prior to finalization.

2.3.6 Hide/Unhide Formula Sheet – **New for CY2010**

This function unhides a worksheet which displays the formulas for all formula cells in the BPT file (except for hidden formula cells); it can be invoked by clicking the  icon on the Toolbar, selecting “Hide/Unhide Formula Sheet” from the File menu, or pressing Ctrl+Shift+H. The Formula sheet is hidden by default and protected from user modification.

2.3.7 BPT Refresh

The BPT Refresh function updates a BPT workbook’s links to other Excel workbooks; it can be invoked by clicking on the  icon on the Toolbar, selecting “BPT Refresh” from the File menu, or pressing Ctrl+Shift+R. BPT Refresh automatically executes upon opening or saving a BPT workbook.

Data entered in some cells (independent cells) affects the status of other cells (dependent cells). For example, if Plan Type (MA1.I.7) is “RPPO,” then MA Region (MA1.I.10) will be editable (and a drop-down menu will appear); if Plan Type is other than “RPPO,” then MA region will not be editable (and “N/A” will appear). If the value of Plan Type is entered in the workbook directly, the status of MA Region will updated whenever Plan Type is modified. However, if the value in Plan Type is *linked* to an external Excel file and the external file is modified, BPT Refresh must be invoked in order to update the status of MA Region.

The following list describes dependent fields—along with the independent fields they depend on—that require BPT Refresh when links are involved as described above. (For further details on the relationships between these fields, see Appendix B, “BPT Refresh Details” or the line-by-line instructions in the MA/MSA and PD BPT Instructions.)

- Plan Type on MA Worksheet 1 Cell G7
 - If the Plan Type is RPPO, the MA Region field will be editable; otherwise it will be protected and display N/A.
 - If the Plan Type is RPPO, the MA Benchmark Plan Bid Component (w5, M17) will be editable; otherwise the field will be protected and display N/A.
- MA-PD indicator on MA Worksheet 1 Cell G8 and Plan ID on Worksheet 1 D6

CY2010 Bid Pricing Tool Technical Instructions

- o If Plan ID is < 800 and MA-PD indicator is “No”, the MA Bid Summary Plan Intention for target Part D basic premium (w6 R47) will be protected and display a value of “N/A – MA only plan”.
- o If Plan ID is < 800 and MA-PD indicator is “Yes”, MA W6 R47 will contain a drop down list.
- o If Plan ID is >800, MA W6 R47 will be protected and display “N/A - EGWP bid”.
- Plan Type on PD Worksheet 1 Cell I6
 - o If the Plan Type is PDP or ED PDP, cell F32 on PD Summary (w7) will be enterable and have a drop-down list displaying values 0.10 and 0.50; for all other plan types, this cell will be protected and display value 0.10.
 - o If the Plan Type is PDP, ED PDP or Fall Back, the Enrollee Type field (w1 I7) will be protected. Otherwise, this cell will be editable.
- PD Benefit Type on PD Worksheet 1, N6
 - o If the PD Benefit Type is EA, PD worksheet 4 will be hidden;
 - o If the PD Benefit Type is DS, both PD worksheet 4 and 5 will be hidden;
 - o If the PD Benefit Type is BA, PD worksheet 4 will be hidden;
 - o If the PD Benefit Type is AE, PD worksheet 5 will be hidden.
 - o If the PD Benefit Type is DS, PD worksheet 6 columns I, J, K in section II will be shaded and protected.
- Use of ISAR factor on MA Worksheet 5 G31
 - o If the ISAR factor is 'Yes', cells G39 to G3333 will be editable; otherwise these cells will be protected.
- MSA Plan Type on MSA Worksheet 1 G7
 - o If the Plan Type is MSA, rows 32-34 on W4 are hidden; otherwise, these rows will display.
 - o If the Plan Type is MSA, cell G38 on MSA worksheet 4 will have the formula =G30; otherwise, the formula will be =G30+G32-G33.
- MA Plan ID on MA Worksheet 1 D6
 - o If the Plan ID is equal to or greater than 800, the employer PMPM input on Worksheet 4 cell R116 is enterable; otherwise it is protected.


CY2010 Bid Pricing Tool Technical Instructions

- Plan level In-Network OOP Max on MA Worksheet 3 G12 – **New for CY2010**
 - o If the OOP Max indicator G12="Yes" then H12 should be enterable, and when G12="No" H12 should be protected.
- Plan level Out-of-Network OOP Max on MA Worksheet 3 J12 – **New for CY2010**
 - o If the OOP Max indicator J12="Yes" then K12 should be enterable, and when J12="No" K12 should be protected.
- Plan level Combined OOP Max on MA Worksheet 3 M12 – **New for CY2010**
 - o If the OOP Max indicator M12="Yes" then N12 should be enterable, and when M12="No" N12 should be protected.

Note: The BPT Refresh does not run the BPT validation rules. Use Circle Invalid function or Validation Report function if you want to refresh the red-circle display.

2.3.8 Enable Protected Excel Functions – **New for CY2010**

This function allows the user to access a list of Excel functions (Change Link, Trace dependents, Trace precedents, Trace error and Remove all arrows) that are disabled because the BPT worksheets are protected; it can be invoked.

You can invoke this function by clicking the icon  on the standard Excel Standard Toolbar, selecting from File Menu, or pressing Ctrl+Shift+K. The system will then—

1. Display a toolbar under the standard toolbar as follow:




2. Allow you to click one of these icons to display the related Excel screen for that function.

You can click the icon  again to hide this toolbar.

The “Change Link” function allows you to change the link source using the standard Excel Edit link function. The “Trace dependents”, “Trace precedents”, “Trace error” and “Remove all arrows” are the standard Excel functions used for Formula auditing and cell tracing. Once enabled, these items function as they do in a standard Excel workbook.

2.3.9 Print Defined Worksheets

This function allows you to print pre-defined worksheets in a BPT; it can be invoked by clicking the  icon on the Toolbar, selecting “Print Defined Worksheets” from the File menu, or pressing Ctrl+Shift+P. The pre-defined worksheets are—

- o MA - Worksheets 1, 2, 3, 4, 6 and the first page of worksheet 5
- o PD - All visible worksheets (which varies based on benefit type)
- o MSA - Worksheets 1,2, 4 and the first page of worksheet 3

CY2010 Bid Pricing Tool Technical Instructions

This function is not available for 2YLB workbook.

Note: This function does not print the validation report; it can be printed manually.

2.3.10 MA and MSA County Code Section

County Codes are entered in the following workbook sections:

- o MA worksheet 5, rows 39 to 3333 columns B through W (MA5.V.3(b,e,f))
- o MSA worksheet 3, rows 39 to 3333 columns B through H (MSA3.III.2(b,e,f)).

The following macro functions are applicable to these sections:

1. The MA and MSA workbooks support up to 3,295 lines of county codes.
2. County codes must be entered in consecutive rows starting with row 39. Row 39 contains the formulae in a blank BPT.
3. **All county codes in Column B should be entered as a 5 digit number preceded by an apostrophe (').** (See Section 2.3.1, “Data Entry and Cell Formats.”) “#N/A” errors will appear if values are entered incorrectly. You cannot successfully finalize a file if there are errors in the county code field. You must correct these errors to finalize the BPT.
4. When a county code is entered in column B, the macros will automatically populate formulae in the following cells:
 - a. Columns C, D and H in the MA workbook [MA5.V.3(c,d,h)].
 - b. Columns C, D, G, and H in the MSA workbook [MSA3.III.2(c,d,g,h)].
5. When a county code is deleted from column B, the macro will remove the automatically populated formulae in the cells described above.
6. All county codes will be sorted in the finalized file in descending order. (See Section 2.4.1, “Finalization Process.”)
7. If the county codes are imported as a batch from another tool and they include spaces or special characters, these spaces and special characters will be sorted as non-blank rows. As a result, you may see some blank lines in the finalized file at the top of the county code section. You should open the working files, remove these lines, and re-finalize the BPT.
8. For each row in the MA and MSA County Code sections ([MA5.V.3] and [MSA3.III.2], respectively), these conditions must be met for finalization to be successful:
 - a. If there is a non-zero value in the Projected Member Months field (column e) then there must be non-zero values in the County Code field (column b) and the Projected Risk Factor field (column f) for the corresponding row.
 - b. If there is a non-zero value in the Projected Risk Factors field (column f), there must be a non-zero number in the County Code field (column b) in the corresponding row.

CY2010 Bid Pricing Tool Technical Instructions

2.3.11 Undo Function

The BPT will support the Excel undo functionality with some exceptions. Modifying any of the cells listed below will cause the actions/states stored in your undo history² to be deleted. This means that after entering, changing, or deleting a value in any of the following cells, you will not be able to undo your previous actions.

- o Plan Type [MA1.I.7], [MSA1.I.7], or [PD1.I.8]
- o MA-PD indicator [MA1.I.8]
- o PD Benefit Type [PD1.I.11]
- o Use of ISAR factor [MA1.V.1] (applicable if Plan Type = RPPO)
- o County Codes [MA5.V.3] or [MSA3.III.2]
- o Any cell with a drop down box
- o Any cell that has a validation error removed due to a correction in the user entered data

A new undo history will begin to compile after each of these cells are modified.

Note: If you have enabled the Excel 2003 Auto Recovery feature, your undo history will be deleted whenever the Auto Recovery feature runs.

2.3.12 Save Functions

There are two save processes available within the BPT: a non-finalized and a finalized save.

A non-finalized save can be invoked by clicking on the Excel Save icon on the Excel Standard Toolbar or by selecting File and then Save from the Excel menu. This save process will save any changes you have made to the BPT workbook.

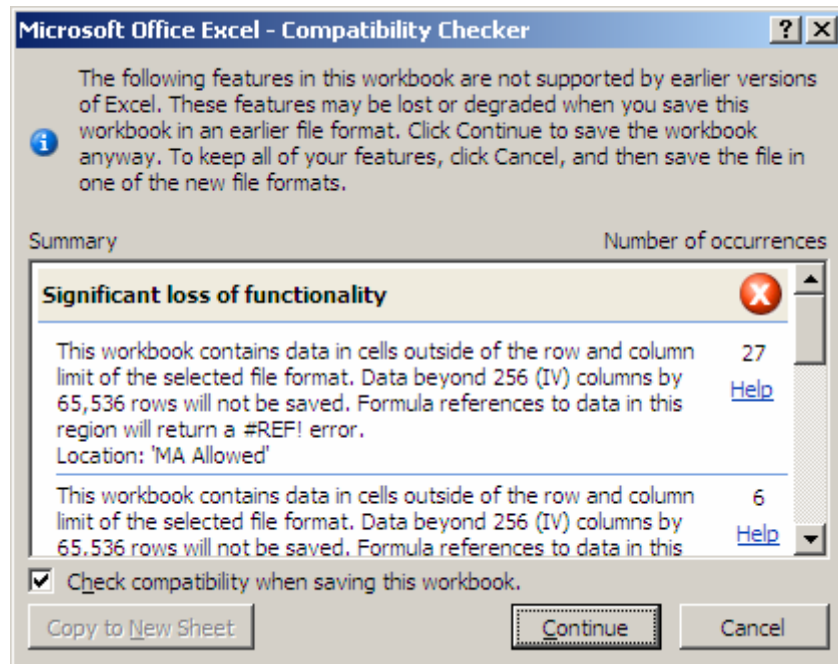
A finalized save occurs when the “Finalize BPT” function is invoked. (See Section 2.4, “Finalizing the BPT for Submission.”) This step is taken when the workbook is complete and ready for upload to HPMS.

In **Excel 2007**, the save functions (both non-finalized and finalized) will save files in the Excel 2003 format. When you invoke the “Finalize BPT” function, the system will create a finalized and backup version of the file in the .xls format.

Note: after clicking “Save” or “Finalize BPT,” the following message will appear:


² The “undo history” is a Microsoft Excel feature that keeps a record of changes made to a workbook. This allows you to step backwards through a list of applied changes. Other built-in Excel functions, including some of those used by the BPT, erase this information automatically due to the large amounts of memory required to maintain the undo history list.

CY2010 Bid Pricing Tool Technical Instructions



Uncheck the box “Check compatibility when saving this workbook” and click “Continue.” The popup will not appear next time you save a BPT. It is also recommended that you perform this step before you execute the Batch Process Tool to avoid any popup messages during the batch process.

2.4 Finalizing the BPT for submission

This function prepares the workbook for submission to HPMS; it can be invoked by clicking the  icon on the Toolbar, selecting “Finalize BPT” from the File menu, or pressing Ctrl+Shift+S. You must finalize your workbooks before packaging them with the PBP data for upload to HPMS.

Before you finalize a BPT file, click the Validation Report or Circle Invalid function to check for any critical errors. If critical errors are not corrected, you will receive an error message and the BPT file will not finalize.

In **Excel 2007**, when you click the Finalize button, the system will save the working file in Excel 2003 format (i.e., “.xls” format) and create finalized and backup files in “.xls” format. You must not change the file format; only “.xls” files can be uploaded to HPMS.

2.4.1 Finalization Process

When the finalization function is triggered, the system will perform the following actions:

- Recalculate the BPT working file—**New for CY2010**

Note: The Excel settings of the BPT include Automatic Calculation of formulas. Users have the ability to change the BPT’s Excel settings, from Automatic Calculation to

CY2010 Bid Pricing Tool Technical Instructions

Manual Calculation, by selecting Tools, Options, and Calculation. However, please note that when a user attempts to finalize the BPT - even if the finalization is unsuccessful due to the failure of critical validations – then the Excel settings of the BPT working file are changed back to Automatic Calculation. The Automatic Calculation is reset during any attempted finalization (whether successful or not).

- Check the required fields—Certain fields (e.g., “Contract Number”) must be entered for finalization to be successful; these fields are listed in Appendix C (“Required Fields”)
- Check the critical validations—Critical validation fields must comply with their validation rules for the finalization process to be successful; the fields are listed in Appendix A (“Critical Validation Fields”). To locate critical errors, create and view a Validation Report; the critical errors will display a “Yes” in the Critical Error column. All critical errors must be corrected for a file to be successfully finalized.
- Save the working file.
- Create a backup file—This is a read-only file that contains the same data as the working file; it can be used to restore data in a working file. (See Section 3.7, “How to use the backup file to restore a prior version of the BPT.”)
- Create a finalized file with the following features:
 - o Designated fields (Plan ID, Segment ID, Region, County Codes) will be padded with a leading apostrophe and leading zeros to display the required number of digits. For example, if you entered 2 for Plan ID, the finalized file will contain ‘002 (See Section 2.3.1, “Data Entry and Cell Formats.”)
 - o All PD worksheets will display in the finalized file, but only the applicable worksheets based on the PD Benefit type will contain data. For example, if you selected BA as Benefit type, and entered data in PD Worksheet 5, and then later change the Benefit type to AE, the data entered in Worksheet 5 will be deleted. (For further information on which worksheets are applicable for which PD Benefit Types, see the Part D bid instructions.)
 - o County Codes ([MA5.V.3] and [MSA3.III.2]) will be sorted in descending order. Note: The data in the working file and the backup file will retain the original (pre-sorted) order.
 - o Formulae will be removed in the finalized file. Formulae in the working file and the backup file will remain.
 - o PD Region [PD1.I.10] will be saved as “N/A” in the finalized file if PD Region in the working file is left blank. The region field in the working BPT remains blank.
 - o Red circles will display for cells that do not pass validation rules. Note: You will be able to finalize the file if the red circled cell is not one of the critical errors. A list of critical validations for each workbook is in Appendix A, “Critical Errors.”

CY2010 Bid Pricing Tool Technical Instructions

- o Validation Report and Rate sheets will be hidden. In the working file you can still create the Validation Report or unhide the Rate sheets as needed.
- o The Working Text Box will be removed from the finalized file (MA Worksheet 6 and PD Worksheet 7) but will remain in the working file and the backup file—**New for CY2010**

2.4.2 File Naming Convention

Finalized BPT workbooks are saved using the following standardized naming convention: Contract ID+Plan ID+Segment ID+Workbook Type.xls. Use of this convention is a requirement for a successful bid upload to the HPMS and enables the Plan Benefit Package software to validate your bid submission file. Note: The 2YRLB uses the Contract ID and the Workbook Type in the finalized filename as shown below.

Example: H1111001001MA.xls, H2222002002PD.xls, H3333003003MSA.xls

Example for 2YLB : R5555_2YRLB.xls

Note: Finalized files will be saved in the same directory where the working file is located.

Backup files use the same naming convention as finalized files with a timestamp appended to the end of the name: finalized filename + “_Backup_”+YYYY-MM-DD-HH:mm.xls

Example: H1111001001MA_Backup_2006-5-20-1000.xls

Example for 2YLB : R5555_2YRLB_Backup_2007-1-10-1548.xls

Note: Back up files will be saved in the same directory where the working file is located.

The working file name can be changed at any time. The finalized and backup BPTs are read-only files. If you need to make additional changes prior to bid submission (i.e., prior to upload to HPMS), modify the working file and finalize the BPT again; the previous finalized file will be overwritten. A new backup file will be created; backup files will not be overwritten (as they are time-stamped). (For guidance on using backup files to recover saved data, see Section 3.7, “How to use the backup file to restore a prior version of the BPT.”)

2.5 Closing the file—**New for CY2010**

When you exit a BPT file by closing the workbook or by closing Excel, the system will check to see if any changes have been made since the last save. If there have been no changes, the file will close. If there have been changes made since the last save, you will receive the following message prompt: “Any unsaved information will be lost. Would you like to save the changes to your <filename>?” If you click—

Yes—the BPT file will be saved and closed.

No—the BPT file will be closed without saving changes

Cancel—the pop-up message disappears and the file will not be closed nor saved.

CY2010 Bid Pricing Tool Technical Instructions

2.6 Password Protection

The BPT is password protected. You may not modify the structure of the BPT workbooks or worksheets. Each data item must be located in its pre-defined cell location for successful processing by the HPMS.

Tampering with the BPT protection, including but not limited to un-protecting and re-protecting any parts of a BPT workbook, **will permanently compromise the file and prevent successful finalization of that BPT workbook**. If a workbook is compromised in this way, you must discard the compromised BPT, download and complete a new BPT.

2.7 Print Functionality

The workbooks contain a BPT-specific Print button that will print a pre-defined set of worksheets (with print areas and page setups pre-designated). (See Section 2.3.9, “Print Defined Worksheets.”)

The standard Excel Print function (select File then Print) will print the current worksheet using the BPT-designated print areas and page setups. Multiple worksheets may be printed by clicking multiple tabs while holding down the Ctrl key or the Shift key) and then invoking the standard Excel Print function.

To bypass the BPT-designated print areas and page setup, set these parameters as you would in Excel and then invoke the standard Excel Print function.

2.8 New Releases

If necessary, the Centers for Medicare and Medicaid Services may deploy a new version of the BPT add-in file to update the BPT workbooks. The new version will be made available to the user community through HPMS. HPMS will send an auto-generated email to certain HPMS users to announce that a new BPT add-in is available for download from HPMS.

If CMS deploys an updated version of the BPT add-in (BPT2010.xla) file, you will need to download this file from the HPMS website. **You must overwrite the existing BPT add-in with the most current version in the C:\Program Files\BPT2010 folder.** If you save multiple versions of the BPT add-in to the BPT2010 folder and elsewhere on your personal computer (PC), you may experience technical difficulties with the BPT.

Note: If you receive the BPT add-in file via email and it is saved to your temporary directory as part of the email download process, you must delete it from the temporary directory.

To verify that the BPT workbooks are using the latest version of the add-in file, compare the version number given during the add-in download process³ to the version number in the upper right corner of Worksheet 1 of the BPT (e.g., “MA-2010.4” indicates that the BPT is using version 4 of the add-in).

³ Go to the HPMS website and select Plan Bids, Bid Submission, Contract Year 2010, Download, BPT Spreadsheets. After clicking on BPT Spreadsheets as indicated above, you can view the version numbers of the BPT workbooks by scrolling to the bottom of the page.

CY2010 Bid Pricing Tool Technical Instructions

You will need to update all of your BPT workbooks (MA, PD, MSA and 2YLB) with the latest BPT add-in file. If you have finalized a BPT with an old version of the add-in file but not yet uploaded it, you must download the new add-in file, update the working file, and re-finalize the BPT.

The BPT workbook is updated automatically when you first open it after downloading the new BPT add-in file. When you receive a message stating that the BPT is out of date, click “OK” to start the update process. As part of the update process, a backup version of your previous BPT will be saved to a C:\Program Files\BPT2010\Update Backup VersionX folder, where X is the add-in file version number.

You will not need to transfer any data from one workbook to another to apply a BPT add-in update. For step-by-step instructions on downloading an add-in file update, see Section 3.3, “How to Update the BPT Add-In” and Section 3.4, “How to Update the Add-In for Multiple BPT Workbooks using the Batch Tool.”

2.9 Batch Process

The Batch Process Tool is supported in Excel 2003 and **Excel 2007. (New for CY2010)**

The Batch Process Tool is supported in the Vista Operating System. The tool can be run under Windows XP or Windows 2000 or Vista.

A Batch Process Tool is available to assist you with updating, finalizing and checking validation errors for multiple BPT workbooks. The estimated execution time for the process can vary greatly based on your PC’s processing power, the number of workbooks in the batch, the size of each workbook (e.g., MA workbooks with a large number of county codes may experience slower execution time). It is recommended that you initially run a small batch (e.g., five to ten workbooks) to assess the execution time specific to your PC. The Batch Process Tool is available for download from the HPMS Bid Submission module. **You must close all BPT workbooks before running the batch process.** After the batch process is completed, close the Batch Process Tool before opening a stand-alone BPT file (to avoid potential conflicts between the files).

Note: You must have Excel 2003 or greater installed to use the Batch Process Tool. If you have Excel 2007, the reports generated will be in the .xlsx format.

All batch processes will skip (i.e., will not process) the following files:

- Non-BPT Excel workbook
- Backup BPT file
- Finalized version of BPT
- Working BPT with different contract year (e.g., CY2009 working file)

The Batch Process Tool will skip these files if they are selected.

CY2010 Bid Pricing Tool Technical Instructions

Before using the Batch Process Tool, make sure the following boxes are checked: “Trust all installed add-ins and templates” and “Trust access to Visual Basic Project.” (Open Excel and select Tools, Macros, Security, and click on the Trusted Publishers tab.)

Note: The Batch Process Tool will set the BPT Calculation flag (click Tools, Options, and the Calculation tab) to “Automatic.” To choose a different setting (after the batch process completes), open a stand-alone BPT workbook and manually change the setting.

2.9.1 Batch Validation Report

This function will generate validation reports for one or more BPT files. To enable this function, launch the Batch Process Tool, select “Validation Report,” and click “Next.” Browse your folders and select the BPT files (with file extension .xls) to be processed. The Batch Process Tool will disable all icons that may disrupt its execution. The execution status of the batch process will be displayed in the Batch Process Tool status window. A success or failure message is displayed for each of the BPT workbooks. At the end of the process, you will receive a message confirming the number of files that passed, failed or were not processed. The report will be saved in the same folder the BPT files were selected from. If you are working in Excel 2007, the report will be saved in the .xlsx format (**New for CY2010**). The report’s Index Page lists the filenames, Contract IDs, Plan IDs, and Segment IDs associated with the report. A hyperlink next to each file will take you to the corresponding report worksheet.

Note: If the BPT files selected to be processed were created with an older add-in file version than the batch process uses, the files will be updated first before being processed by the batch. (See Section 2.9.2, “Batch Update Process.”)

2.9.2 Batch Update Process

If a new version of the BPT add-in is downloaded from HPMS, the Batch Process Tool will allow you to update all of your working BPT files to the latest BPT add-in version. To enable this function, launch the Batch Process Tool, select the “Update BPT” option, and click “Next;” browse your folders, select the BPT files (with file extension .xls) to be updated with the new version of the BPT add-in, and click “Update” to start the batch process. The Batch Process Tool will disable all icons that may disrupt its execution. The execution status of the batch process will be displayed in the Batch Process Tool status window. A success or failure message is displayed for each of the BPT workbooks. If any updates fail, an associated error message will be displayed. When the process is complete, you will receive a message indicating the number of files that passed, failed or were not processed. The updated files will be saved in the same folder they were selected from. (For further instructions, see Section 3.4, “How to Update the Add-In for Multiple BPT Workbooks Using the Batch Tool.”)

To verify that the BPT workbooks are using the latest version of the add-in file, compare the version number given during the add-in download process to the version number in the upper right corner of the BPT worksheets (e.g., “MA-2010.1” indicates that the BPT is using version 1 of the add-in).

CY2010 Bid Pricing Tool Technical Instructions

2.9.3 Batch Finalize Process

You can use the Batch Process Tool to finalize multiple BPT workbooks. Launch the Batch Process Tool, select “Finalize BPT,” and browse your folders to select the BPT files (with file extension .xls) to be finalized; click “Finalize” to start the batch process. During the process, the execution status will display in the Batch Process Tool status window. The Batch Process Tool will disable all icons that may disrupt its execution. A success or failure message will display for each of the workbooks processed, and an error message will display for each workbook that fails finalization. When the process is complete, you will receive a message indicating the number of files that passed, failed or were not processed. The finalized files will be saved in the same folder they were selected from.

Note: If the BPT files selected to be finalized are at a lower version of the add-in file, the files will be updated first and then finalized.

2.9.4 Batch Update PD National Average Process

You can use the Batch Process Tool to update the PD “National Average Monthly Bid Amount” [PD7.III.2] in multiple PD workbooks. Launch the Batch Process Tool and select the “Update PD National Average” option. In the two input fields, enter the “National Average Monthly Bid Amount” [PD7.III.2] and the “Base Beneficiary Premium” [PD7.III.3]. Then browse your folders and select the PD BPT files (with file extension .xls) to be updated; click the “Update National Avg” button to start the batch process. During batch processing, the system will write the two input values into the selected PD files.

The Batch Process Tool will disable all icons that may disrupt its execution. The execution status of the batch process will be displayed in the Batch Process Tool status window. A success or failure message is displayed for each of the BPT workbooks. If any workbooks fail to be finalized, an associated error message will display. When the process is complete, you will receive a message indicating the number of files that passed, failed or were not processed.

A report will be generated and saved in the same folder the PD files were selected from. In Excel 2007, the report will be generated in the .xlsx format (**New for CY2010**). In the report, you will see the file names for all files that were successfully updated. The report will also display the “Basic Part D Premiums, Rounded” [PD7.III.5] before and after the updates for each workbook.

This batch process will ignore the following files:

- Non-BPT Excel workbook
- MA, 2YLB or MSA workbook type
- Backup BPT file
- Finalized BPT file
- Working BPT with different contract year (e.g., CY2009 working file)
- PD workbooks with blank Contract Number, Plan ID values.

CY2010 Bid Pricing Tool Technical Instructions

The report will list ignored files in the section titled, “The following files were not updated because they are not valid CY2010 PD files or contain blank Contract and Plan IDs”.

2.9.5 Batch Update MA BPT with PD Premiums

You can use the Batch Process Tool to copy the Basic and Supplemental Rounded PD Premiums ([PD7.III.5] and [PD7.III.7], respectively) from multiple PD workbooks into the corresponding MA workbooks with the same Contract-Plan-Segment IDs ([MA6.III.C.7a] and [MA6.III.C.8a], respectively). To do this, launch the Batch Process Tool, select “Update MA with PD Premiums,” and browse your folders to select the PD workbooks to be used in the update. On the bottom file selection window, select the MA workbooks that you want to update with the PD premiums. Click the “Update MA with PD Premiums” button to start the batch process. The batch process will copy premium values from the PD workbook(s) into the corresponding MA workbook (i.e., the MA file with the same Contract Number, Plan ID and Segment ID).

The Batch Process Tool will disable all icons that may disrupt its execution. The execution status of the batch process will be displayed in the Batch Process Tool status window. A success or failure message is displayed for each of the BPT workbooks. If any workbooks fail to be finalized, an associated error message will display. When the process is complete, you will receive a message indicating the number of files that passed, failed or were not processed.

A report will be generated and saved in the same folder the MA files were selected from. In Excel 2007, the report will be generated in the .xlsx format (**New for CY2010**). The report will list the PD workbooks—and the corresponding MA workbooks—that were successfully updated. In each processed MA workbook, you will see the PD Premium values ([MA6.III.C.7a] and [MA6.III.C.8a]) both before and after the updates. Duplicate MA workbooks (i.e., one with the same Contract, Plan and Segment ID as another MA workbook) will also be updated with the PD premiums and displayed in the top section of the report. The following files will be ignored by this process:

- Duplicate PD workbooks (i.e., one with the same Contract, Plan, and Segment ID as another PD workbook that has already been processed) will not be processed and will be displayed in the report under the section titled: “The following PD files were not processed because they are a duplicate to a processed PD file”. That is, the PD premiums in the duplicate PD BPT will not be copied into the corresponding MA BPT via the Batch Process Tool.
- MA workbooks that do not match any selected PD workbooks (based on Contract Number, Plan ID and Segment ID), the file will not be processed and will be displayed in the section titled: “The following MA files were not matched to the selected PD source files”. That is, the PD premiums in the MA BPT will not be updated/changed during the batch process.
- PD workbooks that do not match any selected MA workbooks (based on Contract Number, Plan ID and Segment ID), will not be processed and will be displayed in the section titled: “The following PD files were not matched to the selected MA target files”. That is, the PD premiums in the PD workbook will not be copied into any MA workbooks during the batch process.

CY2010 Bid Pricing Tool Technical Instructions

The system will also ignore following files; they will be reported in the section titled: “The following files were not processed because they are not valid CY2010 MA or PD files”:

- Non-BPT Excel workbooks
- 2YLB or MSA workbooks
- Backup BPT files
- Finalized BPT files
- Working BPT files with different contract year (e.g., CY2009 working files)
- MA or PD workbooks with blank Contract Number, or Plan ID values.

2.9.6 Batch Process termination handling

If the Batch Process Tool is terminated abnormally before the process is completed, you must close all Excel instances (i.e., windows) before you re-run the batch process. (See Section 3.8, “How to re-start the Batch process if it terminated abnormally for detailed instructions.”)

2.10 Accessibility Features

The Bid Pricing Tool provides features that allow you to work with BPT files with the use of a keyboard and screen reader. See details in the sections below for features applicable to the workbooks and the Batch Process Tool.

2.10.1 Workbook Accessibility Features

The following are accessibility features available for the BPT workbooks:

- Default location for active cursor upon opening a workbook – The active cursor is located in the worksheet’s title cell (MA W1 B2, MSA W1 B2, PD W1 B2 and 2YLB F2). This allows you to have the same starting point every time the document is opened. It also allows screen reader users to be able to know the worksheet title information upon opening a BPT file.
- Tabbing through active input cells – While using a working BPT file, you can use the Tab key to navigate directly to the editable input cells (yellow-shaded cells)
- BPT-specific functions – Alternative text and shortcut keys are available for you to access the specific functions available in the standard Excel toolbar. See Section 2.2.4 for more information.
- Validation Report – The validation report lists all failed validations. It allows you to use the screen reader to access failed validation information without relying on the red circles displayed on the workbooks. See Section 2.3.2.2 for more information.
- Hide/Unhide Non-Validation Input Cell Label – This function assists vision-impaired users who use screen readers when working with BPTs. It allows you to turn on or off the input cell labels (input messages that display the cell labels) for all non-validation cells. See Section 2.3.4 for more information.

CY2010 Bid Pricing Tool Technical Instructions

- Hide/Unhide Validation Cell Label - This function assists vision-impaired users who use screen readers when accessing validation cells, including both input cells and protected formulae cells. It allows you to turn on or off the input cell labels (input messages that display the validation rules) for all validation cells. See Section 2.3.3 for more information.
- Hide/Unhide Formulae Sheet – This function assists vision-impaired users who use screen readers when accessing cell formulae. It allows you to hide or unhide a worksheet that displays formulae for all formulae cells. See Section 2.3.6 for more information.

2.10.2 Batch Process Tool Accessibility Features

The following are the accessibility features available for the Batch Process Tool:

- When you first open the Batch Process Tool, the cursor defaults to be located on the Keyboard Navigation Instructions button which displays instructions for how to navigate throughout the application using the keyboard.
- The Keyboard Navigation Instructions contains the following information:

NOTE: If the version of the BPT files is older than the version of the add-in (BPT2010.xla) file, the batch process will first update the BPT file and then proceed with the selected process.

To select a batch process, use the Up and Down arrows or the following key stroke combinations:

1. Validation Report: Press ALT + V
2. Version Update: Press ALT + U
3. Finalize BPT: Press ALT + F
4. Update PD National Average: Press ALT + D
5. Update Part D Premium in the MA Workbook: Press ALT + P
6. Keyboard Navigation Instructions: Press ALT + K

After choosing the process, press the Tab key once and then select one of the following options:

1. To go to the next window for the process selected, press ALT + N
2. To exit the tool, press ALT + X

If the Next option is chosen, the next window will default the cursor on the Keyboard Navigation Instructions. To execute the process for the target file or files, conduct the following steps:

1. Press the Tab key twice to focus on the Select Folder section
 - a. For the PD National Average process
 - i. Press the Tab key once to populate the National Average Monthly Bid Amount

CY2010 Bid Pricing Tool Technical Instructions

- ii. Press the Tab key once again to populate the Base Beneficiary Premium
 - iii. Press the Tab key once again to focus on the Select Folder section
 - b. For the Update MA with PD Premiums process
 - i. Press the Tab key twice to focus on the PD Select Folder section
 - ii. Use the Up and Down arrows and the Enter key to navigate to the target parent and subfolder
 - iii. Press the Tab key once to focus on the Select File section
 - iv. Press the Tab key to select the file or files
 - v. Press the Tab key twice to focus on the MA Select Folder section
- 2. Use the Up and Down arrows and the Enter key to navigate to the target parent and subfolder
- 3. Press the Tab key once to focus on the Select File section
 - a. Press the Tab key twice to return to the first screen of the tool
 - b. Press the Tab key three times to exit the tool
- 4. Select the file or files to be processed by using the Up and Down arrows and pressing the Spacebar to highlight the file
- 5. Press the Tab key once and press the Enter key to execute the process

Once the process is complete, a dialog box will pop up and provide a summary of the files that were successfully unsuccessfully processed. To view the Debug log or report, select Yes. To exit the dialog box, select No and the recent process screen will be displayed. At this point, the same process can be run by following the steps above, another process can be run by pressing Alt + R, or the tool can be exited by pressing Alt + E.

CY2010 Bid Pricing Tool Technical Instructions

3 How To...

3.1 Download a Blank Stand-alone BPT Workbook

1. Go to the HPMS Website and select Plan Bids, Bid Submission, Contract Year 2010, and Download
2. Select “BPT Spreadsheets”
3. Read the instructions, select a workbook type (MA, MSA, PD, or 2YLB), and click Download.
4. When prompted to “Save” or “Run” the download file, choose “Save” and select a folder in your directory.

3.2 Download the Batch Process Tool

1. Go to the HPMS Website and select Plan Bids, Bid Submission, Contract Year 2010, and Download.
2. Select ”BPT Batch Tool.”
3. Read the instructions and click the Download button to begin the process.
4. When prompted to “Save” or “Run” the file, BPT2010BatchProcess.exe, choose “Save” and select a folder in your directory.
5. If there is an older version of the file in the same folder, click “Yes” when prompted to replace the older version of the file. The older version will be overwritten by the updated file.

3.3 Update the BPT Add-In

1. In Windows Explorer, navigate to the C:\Program Files\BPT2010 folder.
2. Delete the existing BPT2010.xla file.
3. Go to the HPMS Website and select Plan Bids, Bid Submission, Contract Year 2010, and Download
4. Select” BPT Spreadsheets.”
6. Read the instructions and click the download button to begin the process.
5. Save the file in the C:\Program Files\BPT2010 folder. For **Excel 2007** users, make sure the add-in file extension is .xla, not .xlam. (See Section 2.1.2, “Installing the add-in file for more information.”)
6. Open a BPT and select “Enable Macros”. (Only applicable if Macro security is set to Medium.)
7. Click “OK” when you see the following message: “The current version of this BPT file is version *x*. This is not the most update to date version. Updating to version *y*.”
8. Verify that the BPT has been updated to the newer version by checking the version number in the upper right hand corner of Worksheet 1: cell P7 (for 2YLB workbooks), cell N3 (for PD workbooks), or cell P3 (for MA and MSA workbooks). The number after

CY2010 Bid Pricing Tool Technical Instructions

the period reflects the current version (e.g., MA-2010.1 indicates the BPT is using version 1 of the add-in).

Note: If you download the PBP software from the HPMS website, the BPT add-in file will be automatically saved in the C:\Program Files\BPT2010 folder.

3.4 Update the Add-In for Multiple BPT Workbooks Using the Batch Tool

1. Double-click the BPT Batch Process icon or the BPT2010BatchProcess.exe file name to start the application (after downloading the batch file per Section 3.2, above).
2. On the Select Process Option screen, select “Update BPT”.
3. Click “Next”.
4. Using the files search window, locate the folder where you saved the BPT workbooks (i.e., the “.xls” files).
5. Select the workbooks to update. (Use the Shift key or the Ctrl key to select multiple files.)
6. Click “Update”.
7. Review success/failure messages for the selected workbooks.
8. Verify that the workbooks have been updated to the newer version by checking the version numbers in the upper right hand corner of Worksheet 1: cell P7 (for 2YLB workbooks), cell N3 (for PD workbooks), or cell P3 (for MA and MSA workbooks).

3.5 Finalize an Individual BPT Workbook

1. Open a completed BPT workbook.
2. Select “Enable Macros” when prompted. (Only applicable if Macro security is set to Medium.)
3. Invoke the Finalize BPT function by clicking the icon on the tool bar or, selecting “Finalize BPT” from the File menu, or pressing Ctrl+Shift+S.
4. If you receive any critical validation error messages, you must resolve the errors before attempting to re-finalize your BPT. (See Section 2.4.1, “Finalization Process” for more detail on the finalization process.)
5. Verify that the working file is saved in the designated folder and that the finalized backup files are created in the same folder.

3.6 Finalize Multiple BPT Workbooks Using the Batch Tool

1. Double-click the BPT Batch Process icon or the BPT2010BatchProcess.exe file name to start the application (after downloading the batch file per Section 3.2, above).
2. On the Select Process Option screen, select “Finalize BPT.”
3. Click “Next.”
4. Using the files search window, locate the folder where you saved the BPT workbooks (i.e., the “.xls” files).

CY2010 Bid Pricing Tool Technical Instructions

5. Select the workbooks to update. (Use the Shift key or the Ctrl key to select multiple files.)
6. Click “Finalize.”
7. Review success/failure messages for the selected BPTs.
8. Verify that the working files are saved in the designated folder and that the finalized and backup files have been created and saved in the same folder.

3.7 Use the Backup File to Restore a Prior Version of the BPT

If the working version of the BPT has been corrupted, or you need to roll back to a prior version of your BPT, restoring a backup version of your BPT may be necessary.

1. In Windows Explorer, locate the backup file in the same directory where the working file is saved.
2. Right-click on the backup file name.
3. Select “Rename” from the menu.
4. Remove the word Backup from the file name and enter.
5. Open the file and verify that the file is editable.

3.8 Re-start the Batch Process if it is Abnormally Terminated

1. Save and close any open non-BPT Excel workbooks.
2. Hit Ctrl+Alt+Delete to launch the Task Manager, select the Processes tab, and click the “Image Name” column to sort the processes names.
3. Select EXCEL.EXE and click “End Process” button. If more than one EXCEL.EXE process is found, repeat this step to end all the EXCEL.EXE processes.
4. Close the Task Manager.
5. Double click the BPT Batch Process application icon or the BPT2010BatchProcess.exe file name to re-start the Batch Process.

3.9 Update PD National Averages in Multiple PD files

1. Double click the BPT Batch Process icon or the BPT2010BatchProcess.exe file name to start the application (after downloading the batch file per Section 3.2, above).
2. On the Select Process Option screen, select “Update PD National Average.”
3. Click “Next.”
4. Enter values in the input fields for the National Average Monthly Bid Amount and the Base Beneficiary Premium.

CY2010 Bid Pricing Tool Technical Instructions

5. Using the files search window, navigate to the location where you saved PD workbook (.xls) files.
6. Select the PD files. You can use the Shift or Ctrl key to select multiple files.
7. Click the “Update PD National Average” button.
8. Review success/failure messages for the selected BPTs.
9. After the process completes, verify that the PD files are updated correctly. A report will be available in the same folder where the PD files are located. Note: If you are working in Excel 2007, the report will be generated in the .xlsx format.

Also, see Section 2.9.4, “Batch Update PD National Average Process.”

3.10 How to update multiple MA files with PD Premiums

1. Double click the BPT Batch Process icon or the BPT2010BatchProcess.exe file name to start the application.
2. On the Select Process Option screen, select “Update PD Premiums in MA”.
3. Click “Next”.
4. Using the top files search window, navigate to the location where you saved PD workbook (.xls) files.
5. Select the PD files. You can use the Shift or Ctrl key to select multiple files.
6. Using the bottom files search window, navigate to the location where you saved MA workbook (.xls) files. Note: The MA files should match to the PD files selected above (same Contract Number, Plan ID and Segment ID).
7. Click the “Update PD Premiums in MA” button.
8. Review success/failure messages for the selected BPTs.
9. After the process completes, verify that the MA files are updated correctly. A report will be available in the same folder where the MA files are located. Note: If you are working in Excel 2007, the report will be generated in the .xlsx format.

Also, see Section 2.9.5, “Batch Update MA BPT with PD Premiums.”

CY2010 Bid Pricing Tool Technical Instructions

4 Troubleshooting and FAQ

4.1 Problems with the Add-In File

If you are having difficulty opening, saving or finalizing a BPT, check to see if more than one copy of the CY2010 add-in file is saved on your PC. To ensure you only have the latest copy of the CY2010 add-in file, stored in the correct location, perform the following:

1. Delete all BPT2010.xla files saved in C:\Program Files\BPT2010\.
2. Download the BPT2010.xla file from the HPMS website and save it in the C:\Program Files\BPT2010 folder. For Excel 2007 users, make sure the add-in file extension is .xla, not .xlam. (See Section 2.1.2, “Installing the Add-in File.”)
3. Confirm that the macro security setting is set to Medium.
 - a. Open an Excel window.
 - b. Click Tools, Option, Security, and then Macro Security.
 - c. Verify that the setting is Medium.
 - d. Close the Excel window.
4. Confirm the add-in is unloaded properly.
 - a. Open an Excel window.
 - b. Click Tools then Add-ins.
 - c. Verify that both the CY2009 and CY2010 add-ins are unchecked.
 - d. Close the Excel window.
5. Close all Excel windows on your PC.
6. Launch the Task Manager, select Processes tab, select EXCEL.EXE and click “End Process” if applicable. Repeat for each instance of EXCEL.EXE.
7. Confirm that there is only one BPT add-in on the PC.
 - a. Click on “Start”, select Search, then the For Files or Folders option
 - b. Enter BPT2010.xla in the Search for Files and Folders name box.
 - c. Select Local Hard Drive C: in the Look In dropdown box.

CY2010 Bid Pricing Tool Technical Instructions

- d. If multiple files are found, delete the BPT2010.xla in any other folders and keep only one BPT2010.xla file in the C:\Program Files\BPT2010 folder.
 - e. Repeat step c for any other local hard drives (e.g., D:\) that might contain the BPT2010.xla file.
8. Check the workbook to see if the issue is resolved.

CY2010 Bid Pricing Tool Technical Instructions

4.2 FAQ's

Question 1: When I open a BPT file, I only see the BPT SplashScreen. Where are the other worksheets?

Answer: You may have multiple BPTs open in separate instances (i.e. windows) of Excel or it may be due to a corrupted add-in file. Close all but one BPT file and/or re-install the add-in file. (See Section 4.1, “Problems with the Add-In File,” to re-load the add-in file.)

Question 2: Why can't I find the BPT commands, such as BPT Finalize, Circle Invalid and BPT Refresh icons, on my Excel Toolbar?

Answer: The BPT icons are loaded with the Excel Standard Toolbar and they only appear when the Excel Standard Toolbar is enabled. Follow the steps below to load the Standard Toolbar.

1. On the Excel file menu, select View, Toolbars, and then select “Standard Toolbar”.
2. Close the Excel window.
3. Open the BPT.

Question 3: I have entered multiple County Codes (MA5.V.3 or MSA3.III.2), but the formulae are not copied into row 40 and below?

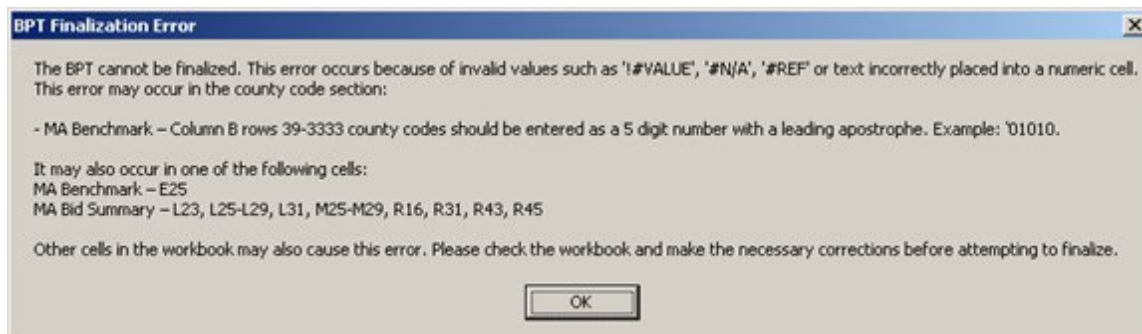
Answer: This may be due to the BPT add-in file not being properly loaded in the BPT. Follow the steps in Section 4.1, “Problems with the Add-In File,” to re-load the add-in file.

Question 4: The Macro Security setting on my PC is set to “Low” but I don't see the prompt when opening the BPT. Do I need to enable the Macros in another way?

Answer: If the Macro security setting is “Low”, the BPT add-in file will automatically run when you open the BPT; therefore, you don't see the prompt to enable macros. For security purposes, it is recommended that the Macro Security Level be set to “Medium.”

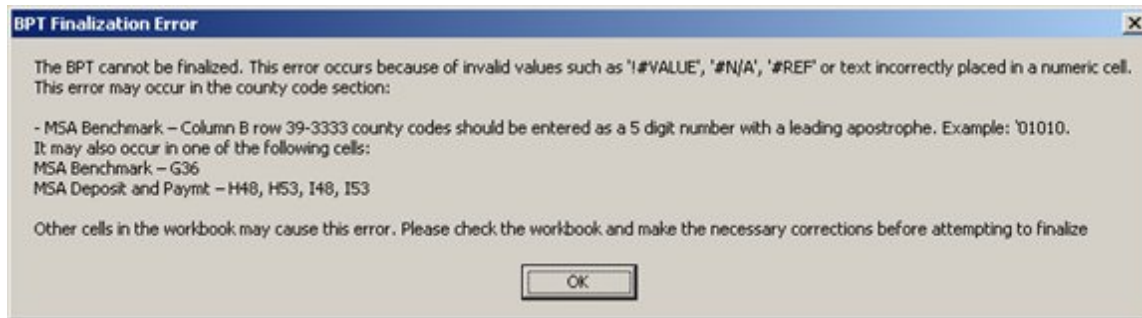
Question 5: I encountered the following error(s) when finalizing the BPT, what should I do?

Error Message 1 in MA BPT:

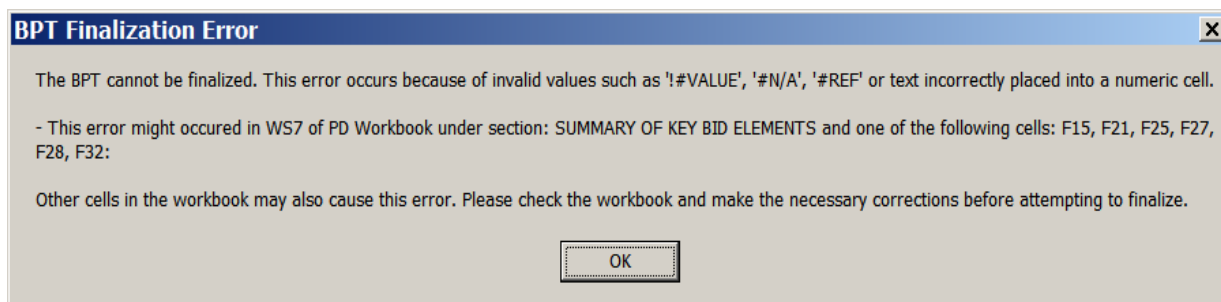


CY2010 Bid Pricing Tool Technical Instructions

Error Message 2 in MSA BPT:



Error Message 3 in PD BPT:



Error Message 4 in MA, PD, MSA or 2YLB:

*There was an error when finalizing the BPT.
Error 13: Type mismatch*

Answer:

If you receive any of these messages, check the referenced workbook cells and verify that they do not contain # VALUE, # N/A, # REF, text, or #DIV/0!.

If the referenced cells do contain valid values, please check the entire workbook for cells that either contains the #ERROR message or text values instead of numeric values. These need to be corrected before you can finalize the BPT workbook.

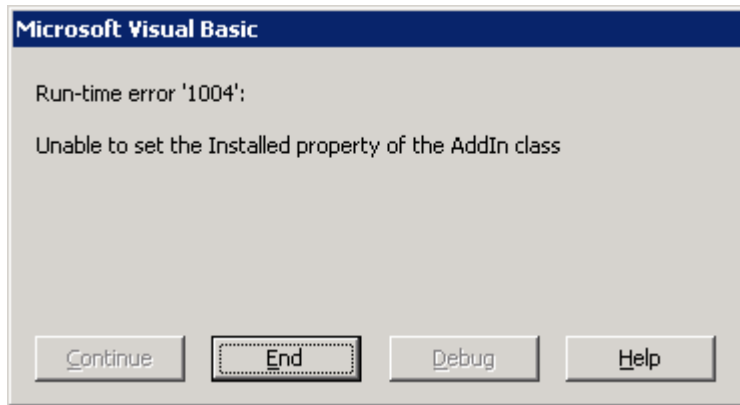
Question 6: I received a “subscript out of range” error. What should I do?

Answer: CY2009 and CY2010 working files cannot be open in the same Excel instance (window). Open the CY2009 working file in a different Excel instance. (Close all workbooks and all instances of Excel. Open Excel and—in that (first) instance—open the CY2010 workbook. Then open a second instance of Excel and open the CY2009 workbook in the second instance. (See Section 2.2.2, “Version Compatibility.”) If this does not resolve the issue, open an Excel window, select Tools, Add-in, and then make sure the “BPT2009” and “BPT2010” boxes are unchecked. Open the BPT file in this Excel window.

CY2010 Bid Pricing Tool Technical Instructions


For returning BPT users (i.e., those that used the CY2009 BPT), you may receive this error message upon opening the CY2010 BPT for the very first time. If this error occurs, select the “Tools” menu in Excel, select “Add-in” and un-check the “BPT2009” box. Verify that the “BPT2010” box is checked. This will resolve the error when opening the CY2010 BPT thereafter.

Question 7: I receive the following Run Time Error when opening BPT files in Excel 2007. What should I do?



Answer: This may happen if the Excel process does not load the BPT add-in file properly prior to opening and saving a working BPT file in the same Excel instance. You can open an Excel instance and click the Excel icon in the top left corner. Click Excel Options then Add-ins. Click “Go” next to the Manage Excel add-in box. In the list of add-ins, select the checkbox for BPT2010. Close the existing Excel window and re-open the BPT file. If this does not resolve the issue, follow the steps in Section 4.1, “Problems with the Add-In File,” to re-load the add-in.

Question 8: I am trying to open BPT files in Excel 2007, but I do not see the Option button. How do I enable contents?

1. Click the Microsoft Office Button , and then click Excel Options.
2. Click Trust Center, click Trust Center Settings, and then click Message Bar.
3. Click the options that you want:

You need to select the first radio buttons below:

- Show the Message Bar in all applications when document content has been blocked This option is selected by default so that you get Message Bar alerts whenever potentially unsafe content has been disabled. The option is not selected if you clicked the Disable all macros without notification option on the Macros pane of the Trust Center. If you click Disable all macros without notification, you won't get Message Bar alerts when macros are disabled.

CY2010 Bid Pricing Tool Technical Instructions

- Never show information about blocked content This option disables the Message Bar.

4.3 Support

HPMS Help Desk

If you need additional assistance, please call the HPMS Help Desk at 1-800-220-2028 or email them at hpms@cms.hhs.gov.

CY2010 Bid Pricing Tool Technical Instructions

5 Appendix A— Critical Errors

5.1 MA Critical Errors and Related Error Messages

These errors will prevent successful finalization.

1. "Unallocated rebates," (WS6, L31), must equal zero. (Red circle validation)

Error message: All rebates (WS6 L31) must be allocated.

2. Part B and D rebate allocations (WS6, L27-29) must be rounded to one decimal (i.e., no pennies). (Red circle validation)

Error message: Part B and D rebate allocations (WS6 L27, L28 and L29) must be rounded to one decimal point.

3. Part D **Supplemental**, MA, and Total Premium amounts (WS6, R31, R43, R45) cannot be negative (i.e., must be greater than or equal to zero). Note: Part D **Basic** Premiums (WS6, R37) are permitted to be negative. (Red circle validation)

Error message: Premiums (WS6 R31, R43 and R45) must not be negative.

4. Rebate allocations (w6, L25-L29) cannot exceed maximum values (w6, M25-M29). Note the following two exceptions: if M25 is negative, then L25 is permitted to be zero (or blank), and if M28 is negative, then L28 is permitted to be zero (or blank). (Red circle validation)

Error message: Allocated rebates (WS6 L25-L29) must not exceed maximum values (WS6 M25-M29).

5. Rebate allocations (w6, L25-29) must not be negative. (Red circle validation)

Error message: Rebate allocations (WS6 L25-L29) must be greater than or equal to zero.

6. For EGWP bids (i.e., plan IDs 800 or higher), Part D rebates (w6, L28-L29) must be zero. (Red circle validation)

Error message: For 800 series plans, Part D rebates (WS6 L28-L29) must be equal to zero.

7. For MA-only bids (i.e., MA-PD indicator = "N"), Part D rebates (w6, L28-29) must be zero. (Red circle validation)

Error message: For MA-only plans, Part D rebates (WS6 L28-L29) must be zero.

8. For MA-only bids (i.e., MA-PD indicator = "N"), Part D premiums (w6, R34, R40) must be zero or blank. (Red circle validation)

CY2010 Bid Pricing Tool Technical Instructions

Error message: For MA-only plans, Part D premiums (WS6 R34, R40) must be zero or blank.

9. MA rebates allocations (w6, L25-26) must be rounded to TWO decimal points. (Red circle validation)

Error message: MA rebates allocations (WS6 L25-26) must be rounded to 2 decimal points.

10. Valid target premium (w6 R47) must be selected from drop-down menu options (i.e., cannot be left blank for MA-PD plans). (Red circle validation)

Error message: For MA-PD plans, the Plan Intention for Part D premium (WS6 R47) must not be blank.

11. Plan A/B Benchmark and Bid (WS5, E17 and E18) must be greater than zero. (Red circle validation)

Error message: The Plan A/B Benchmark (WS5 E17) and Plan A/B Bid (WS5 E18) must not be blank.

12. For Employer bids (i.e., 800 series Plan IDs), Part D basic and supplemental premiums (WS6 R37 and R43) must be zero. (Red circle validation)

Error message: For Employer bids (i.e., 800 series Plan IDs), Part D basic and supplemental premiums (WS6 R37 and R43) must be zero.

13. In the MA county code section, if there is a non-zero value in the Projected Member Month column (Column E), there must be a non-zero value in the County code (Column B) and a non-zero value in the Projected Risk Factor column (Column F) for the corresponding row.

Error Message: In the MA Benchmark worksheet, county level detail and service area summary section, if there is a non-zero value in Projected Member Month (column E) there must be a valid non-zero value in County code (column B) and Projected Risk Factors (column F) in the corresponding row.

14. In the MA county code section, if there is a non-zero value in Column F (Projected Risk factors), there must be a non-zero number in Column B (county code) in the corresponding row. **New for CY2010**

Error Message: In the MA Benchmark worksheet, county level detail and service area summary section, if there is a non-zero value in Projected Risk Factors (Column F), there must be a valid non-zero value in County code (column B) in the corresponding row.

15. WS2 O38 has a 50 cent threshold, as follows: - **New for CY2010**

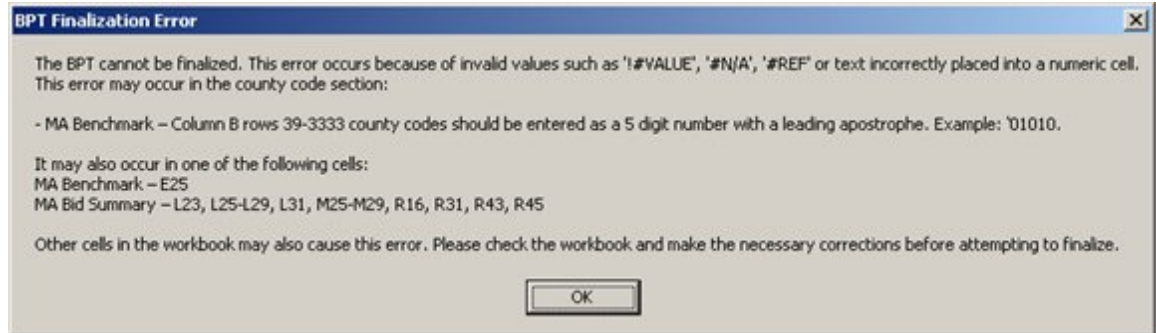
If the absolute value of $\{[(P38 \times P13 + Q38 \times Q13) \text{ divided by } O13] \text{ minus } O38\}$ is greater than 0.50, then apply critical validation. Skip the validation when O13 is zero.

CY2010 Bid Pricing Tool Technical Instructions

Error message: On MA Worksheet 2, the absolute value of $\{[(P38 \times P13 + Q38 \times Q13) \text{ divided by } O13] \text{ minus } O38\}$ should not be greater than 0.50.

16. An error message will display if the county code section (W5 Column H-W, Row39-3333) contain any invalid values, such as #N/A, DIV! errors etc.
17. The following cells should not contain invalid values: W5 E25, W6 L23, R16, L25-29, L31, M25-29, R31, R43, and R45.

Error message:



5.2 MSA Critical Errors and Related Error Messages

Note: the MSA parameters below are CY2009 values.

1. For MSA Demo plan type, MSA worksheet 1 Cell G8 Deductible Amount should be greater than or equal to Minimum deductible and less than or equal to Maximum deductible.

Error message: For the MSA Demo plan type, the MSA Base Deductible Amount (WS1 G8) must be greater than or equal to \$2,200 (Minimum Deductible amount) and less than or equal to \$10,600 (Maximum deductible amount).

2. For the MSA Demo plan type, the MSA worksheet 4 Cell G48 Monthly Enrollee Deposit times 12 (Annual Deposit) must be at least 1000 less than the Deductible Amount cell G8 of Worksheet 1.

Error message: For MSA Demo plan type, Monthly Enrollee Deposit (WS4 G48) times 12 (Annual Deposit) must be at least 1000 less than the Deductible Amount (WS1 G8).

3. For MSA plan type, MSA worksheet 1 Cell G8 Deductible Amount should be less than or equal to the Maximum deductible amount \$10,600.

Error message: For the MSA plan type, the Deductible Amount (WS1 G8) should be less than or equal to the Maximum deductible amount \$10,600.

4. In the MSA Benchmark worksheet, county level detail and service area summary section, if there is a non-zero value in Projected Member Month (column E) there must be a valid

CY2010 Bid Pricing Tool Technical Instructions

non-zero value in County code (column B) and Projected Risk Factors (column F) in the corresponding row.

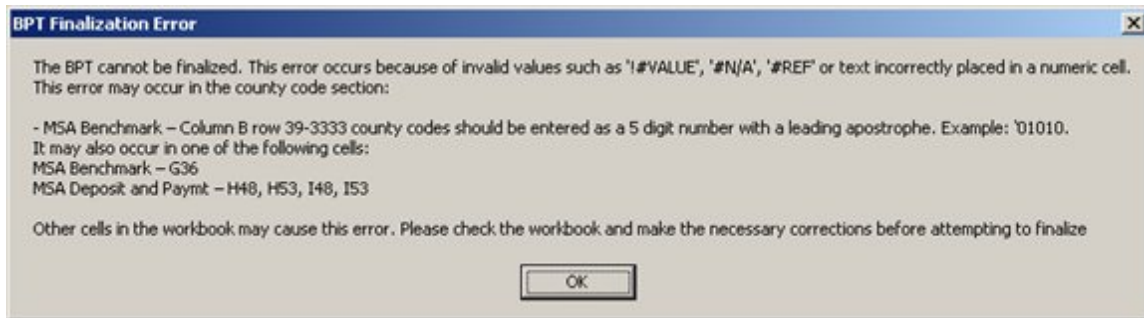
Error message: In the MSA Benchmark worksheet, county level detail and service area summary section, if there is a non-zero value in Projected Member Month (column E) there must be a valid non-zero value in County code (column B) and Projected Risk Factors (column F) in the corresponding row.

5. In the MSA county code section, if there is a non-zero value in Column F (Projected Risk factors), there must be a non-zero number in Column B (county code) in the corresponding row. **New for CY2010**

Error Message: In the MSA Benchmark worksheet, county level detail and service area summary section, if there is a non-zero value in Projected Risk Factors (Column F), there must be a valid non-zero value in County code (column B) in the corresponding row.

6. An error message will display during finalization if the county code section (W3 Column G-H, Row39-3333) contains invalid values, such as #N/A, DIV! errors etc.
7. The following cells should not contain invalid values: W3 G36, W4 H48, H53, I48 and I53.

Error message:



5.3 PD Critical Errors and Related Error Messages

1. For WS4 E59 and E60: The Actuarial Equivalence tests should equal 'Yes' if the PD benefit type is 'AE'.

Error message: The Actuarial Equivalence tests (WS4 E59-E60) should equal 'Yes' if the PD benefit type is 'AE'.

2. For WS5 G68: Total Coverage test should be 'Yes' if PD Benefit Type is 'BA' or 'EA'.

Error message: The total Coverage test (WS5 G68), Unsubsidized Value test (WS5 G69), Average Cost test (WS5 G70), Deductible test (WS5 G71) and Average Catastrophic Cost Sharing test (WS5 G72) should be 'Yes' if PD benefit type is 'BA' or 'EA'.

CY2010 Bid Pricing Tool Technical Instructions

3. For WS5 G69: Unsubsidized Value test should be 'Yes' if PD benefit type is 'BA' or 'EA'.

Error message: The total Coverage test (WS5 G68), Unsubsidized Value test (WS5 G69), Average Cost test (WS5 G70), Deductible test (WS5 G71) and Average Catastrophic Cost Sharing test (WS5 G72) should be 'Yes' if PD benefit type is 'BA' or 'EA'.

4. For WS5 G70: Average Cost at Initial Coverage Limit test should be 'Yes' if PD benefit type is 'BA' or 'EA'.

Error message: The total Coverage test (WS5 G68), Unsubsidized Value test (WS5 G69), Average Cost test (WS5 G70), Deductible test (WS5 G71) and Average Catastrophic Cost Sharing test (WS5 G72) should be 'Yes' if PD benefit type is 'BA' or 'EA'.

5. For WS5 G71: Deductible test should be 'Yes' if PD benefit type is 'BA' or 'EA'.

Error message: The total Coverage test (WS5 G68), Unsubsidized Value test (WS5 G69), Average Cost test (WS5 G70), Deductible test (WS5 G71) and Average Catastrophic Cost Sharing test (WS5 G72) should be 'Yes' if PD benefit type is 'BA' or 'EA'.

6. For WS5 G72: Average Catastrophic Cost Sharing test should be 'Yes' if PD benefit type is 'BA' or 'EA'. Error message: The total Coverage test (WS5 G68), Unsubsidized Value test (WS5 G69), Average Cost test (WS5 G70), Deductible test (WS5 G71) and Average Catastrophic Cost Sharing test (WS5 G72) should be 'Yes' if PD benefit type is 'BA' or 'EA'.

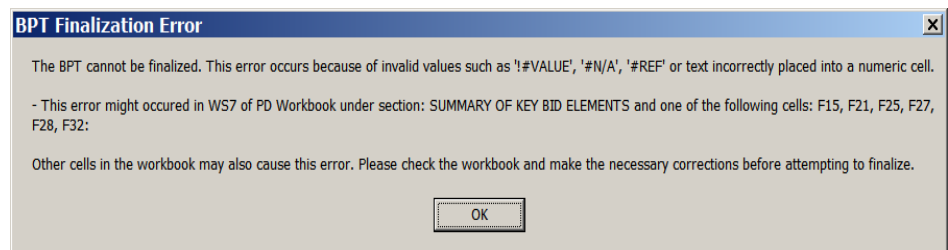
7. For WS5 O76: Development of Supplemental Premium should be 0 if PD benefit type is 'BA' or greater than 0 if it is 'EA'.

Error message: The Development of Supplemental Premium (WS5 O76) should be zero if the PD benefit type is 'BA'.

Error message: The Development of Supplemental Premium (WS5 O76) should be greater than zero if PD Benefit type is 'EA'.

8. For WS7, the following cells, F15, F25, F27, F28, F32 should not have any invalid values such as #VALUE, #DIV/0!, or #N/A.

Error Message:



CY2010 Bid Pricing Tool Technical Instructions

6 Appendix B—Required Fields

- MA Base: Contract Number, Plan ID, MA-PD, Plan Type, Enrollee Type, SNP, MA Region
- MA Bid Summary: Name, Phone, Email for Plan Bid Contact and Certifying Actuary: D39:D41, D45:D47
- PD Base: Contract Number, Plan ID, Plan Type, Enrollee Type (when plan type is not PDP, ED PDP or Fall Back), SNP, PD Benefit Type, Payment Demo Type
- PD Summary: Name, Phone, Email for Plan Bid Contact and Certifying Actuary: C36:38, C40:42
- MSA Base: Contract Number, Plan ID, Plan Type
- MSA Benchmark: Name, Phone, Email for Plan Bid Contact and Certifying Actuary: D14:D16, D20:22
- MA 2YLB: Contract Number